

**Maryland Patient Safety Center
SAFE from FALLS**

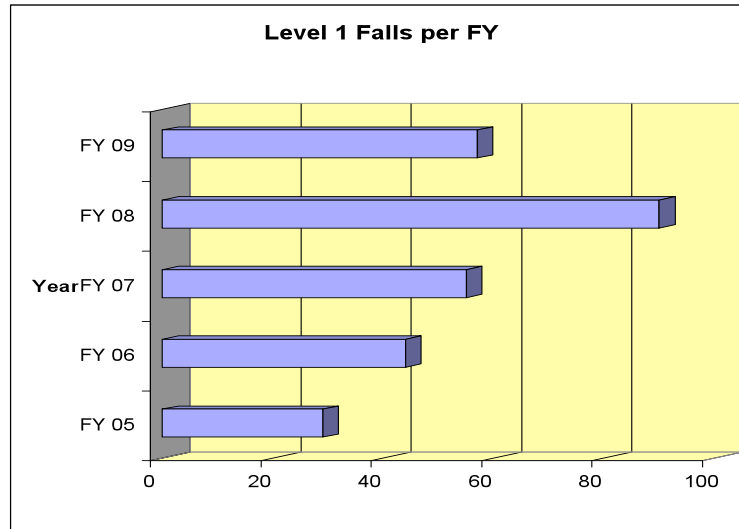
**Roadmap to a Comprehensive Falls
Management Program**

April 2, 2009

**I Just Had My Back Turned for
a Second!**

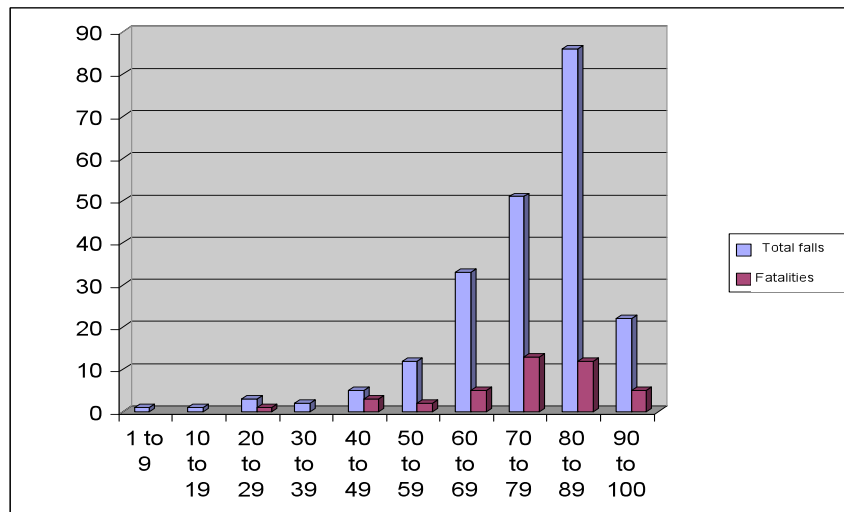
Anne Jones, RN, BSN, MA
Nurse Surveyor
Office of Health Care Quality

Level 1 Falls in Maryland Hospitals

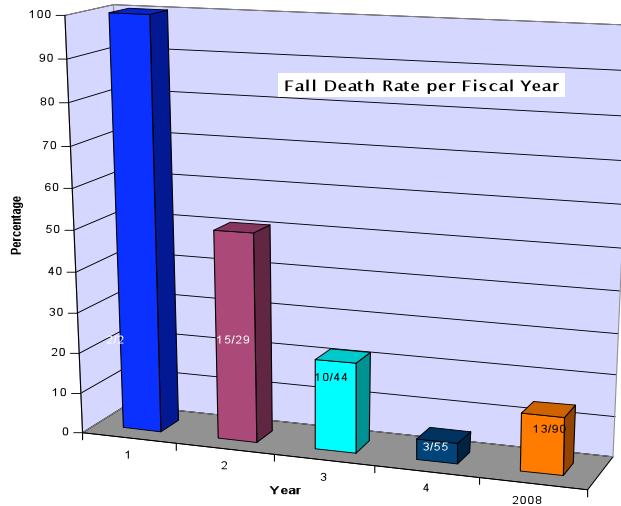


Fatalities by age group

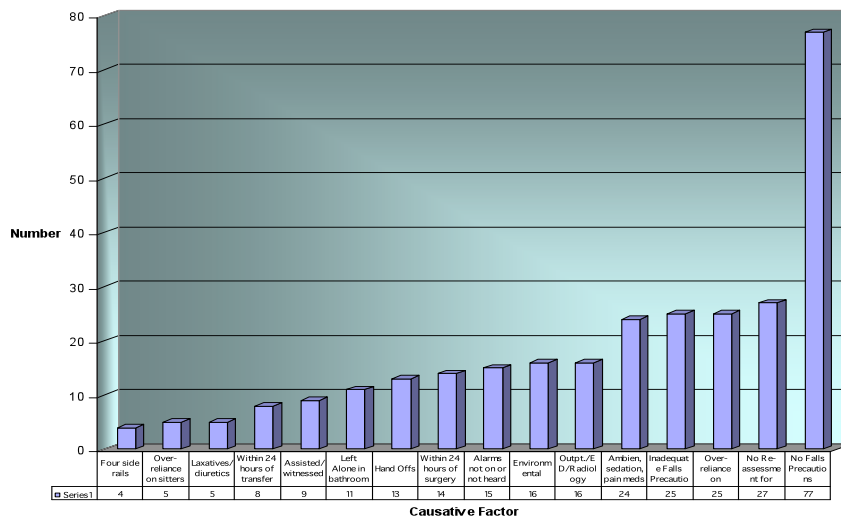
3/04 to 7/08



Death Rate per FY



Causative factors



Objectives

- Define a fall
- Provide an overview of the MPSC Falls Management Initiative
- Define the goals of the pilot
- Review the pilot timeline and next steps

Definition of a Fall

**“Any unplanned descent from higher level to lower level, ground or floor”
(per NDNQI definition of a fall)**

SAFE from FALLS Roadmap

- Developed by the Minnesota Hospital Association
- Aims to provide a non-prescriptive guide for a comprehensive Fall Management Program
- Implementation requires two main components
 - Fall Management Program Infrastructure
 - Patient/Resident Care Bundles

The SAFE Comprehensive Fall Management Infrastructure

- **S**- Safety coordination
- **A**- Accurate and concurrent reporting
- **F**- Facility expectations, staff education, and accountability
- **E**- Education for patients and families

The FALLS Patient/Resident Care Bundle

- **F**- Falls risk screening
- **A**- Assessment of risk factors
- **L**- Linked interventions
- **L**- Learn from events
- **S**- Safe environment

Project Design

- 5 Phases
 - Tool Development (July '08 – Sept. '08)
 - Recruitment and Preparation (Oct. '08)
 - Pilot (Nov. '08 – May '09)
 - Lessons Learned at Outcomes Congress (June '09)
 - Beyond the Pilot (Statewide Rollout begins July '09)

Pilot Design

- Quality Improvement Program: Rapid cycle implementation of roadmap components with personal coaching/technical assistance
- Learning Network: Monthly sharing calls, conference call sessions and “virtual community” will be designed to provide learning and knowledge transfer opportunities

Goals

- Collect standardized process and outcome measures across multiple settings (Acute Care, Nursing Homes and Home Care) related to Falls
- Attribute the implementation of the SAFE FALLS Roadmap components (including cross-cutting tools) to the reduction of Falls in pilot sites
- Provide a standardized infrastructure for a comprehensive Fall Management Program in the State of Maryland

Recruitment Strategy

Recruit **10** Hospitals, **10** Long Term Care Facilities, and **5** Home Health Facilities that:

- Can actively participate in a 8-month intensive Quality Improvement program;
- Have an established Fall Management Program in place; and
- Are willing to make an honest and objective assessment of its attitude, resources, and infrastructure for change

Participation Requirements

- Participation agreement execution by CEO/Executive Leader
- Establish a multi-disciplinary team
- Complete three Roadmap Audit Questionnaires (Nov., Feb., May)
- Submit Falls Outcome Data monthly via established portal and “virtual community”
- Implement the SAFE from FALLS Roadmap elements (including cross-cutting tools)

Participation Requirements Cont...

- Participate in Setting-Specific Monthly Sharing Calls, 2 All-Participant Conference Calls and the Outcomes Congress, June 2009
- Complete Pilot feedback tool and program evaluation
- Share lessons learned through conference calls, list-serve, and other sharing opportunities

What's Expected from Participants?

- Strong commitment to implementation, participation
- Timely data collection and submission
- Active participation in sharing opportunities

Outcome Measures

- Average Daily Census
- Total Number of Falls
- Total Number of Falls w/ Injury
- Number of Days Between Falls

Project Plan...

November 1 - 30, 2008	Baseline Process and Outcome Measures Data collection
Ongoing	Weekly Personal Technical Assistance Calls
Beginning December 2008	Monthly Sharing Calls
Beginning December 2008	Pilot site visits (will be arranged with each pilot facility)
Beginning December 2008	Monthly Technical Assistance Calls
December 31, 2008	Baseline Data Analysis Report

What's in it for Your Patient/Resident?

- Organizational Commitment to Patient/Resident Safety
- Establishment of Patient/Resident Partnership with Care Provider
- Improved Patient/Resident Outcomes
- Fewer Patient/Resident Injuries
- Reduced Care Costs
- Decreased Risk to Patient/Resident

What's in it for Your Facility?

- Attend Learning Sessions (via Conference Calls) conducted by nationally renowned experts
- Obtain advanced technical assistance at no-charge
- Network and share opportunities with a diverse set of providers
- Impact the future of Healthcare in Maryland
- Obtain formal recognition from the Maryland Patient Safety Center

Expert Panel Overview of Specialty Areas

- **Acute Care**
 - Tina Gionet, Sinai Hospital of Baltimore
 - Shirley Knelly, Anne Arundel Medical Center
- **Long Term Care**
 - Sharon Forest, Genesis Health Care
- **Home Health**
 - Barbara Bond, Delmarva Foundation

Special Thanks...

- MPSC Falls Task Force
 - Camilla Rogers, R.N., J.D.
- Acute Care Work Group
 - Co-chair: Tina Gionet, Sinai Hospital of Baltimore
 - Co-chair: Shirley Knelly, Anne Arundel Medical Center
- Long Term Care Work Group
 - Chair: Sharon Forest, Genesis Health Care
- Home Health Work Group
 - Chair: Barbara Bond, Delmarva Foundation
- The Maryland Patient Safety Center (MPSC)
- The Delmarva Foundation for Medical Care (DFMC)
- Maryland Healthcare Education Institute (MHEI)
- The Minnesota Hospital Association

Contact Information

Erin N. Carrillo, MHA

Project Manager

weichbrode@dfmc.org

410-872-9699

More Information to Come...

The SAFE from FALLS Congress will be held June 16, 2009.
Invitations are being sent to individual organizations.

Statewide roll out of SAFE from FALLS Initiative– To Be
Announced. Watch for notification in the near future.

Questions?